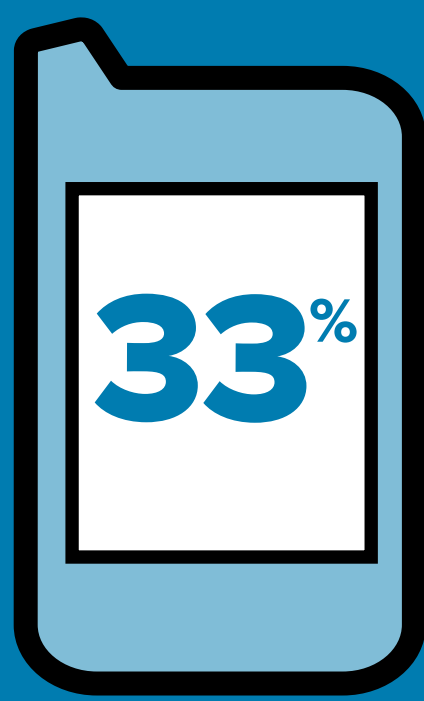
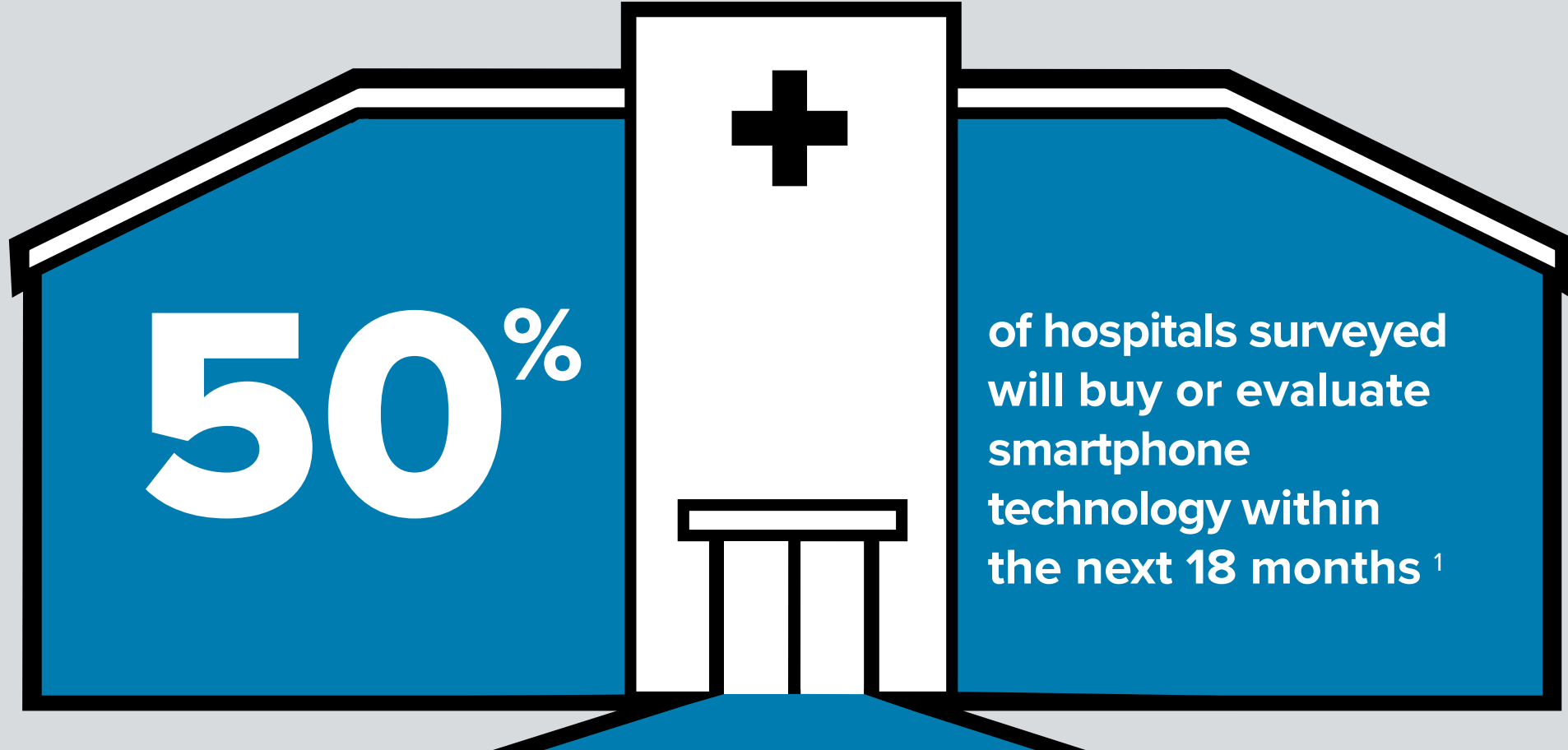


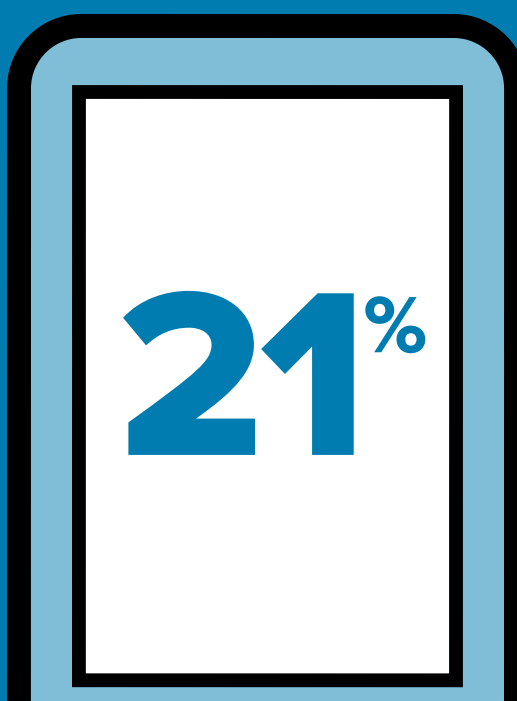


# Healthcare on the Move

## CLINICIANS ARE HEADED TOWARD GREATER MOBILITY



of hospitals support enterprise devices <sup>1</sup>



of hospitals support personal devices <sup>1</sup>



of hospitals support personal and enterprise devices <sup>1</sup>

**50%** of hospitals have deployed VoIP solutions within their organizations <sup>2</sup>

**89%** of hospitals expressed concerns that consumer grade smartphones were not well suited for their environment due to durability <sup>1</sup>

**70%**

of nurses use smartphones for work <sup>1</sup>

**32%**

of nurses consult a smartphone instead of a doctor <sup>3</sup>

**80%**

of nurses are using the standard, unsecure, HIPAA noncompliant, bundled SMS application on their smartphone <sup>2</sup>

**52%**

of nurses will use an app instead of asking a colleague for information <sup>3</sup>



## Our Story

Zebra's Mobility solutions enable staff to collaborate and focus on Patient Care.



Reliable Voice



Patient Record Access



Nurse Call & Alerts

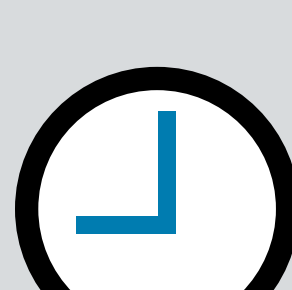


Secure Messaging



Alarms

Integrated voice and data mobile devices can:



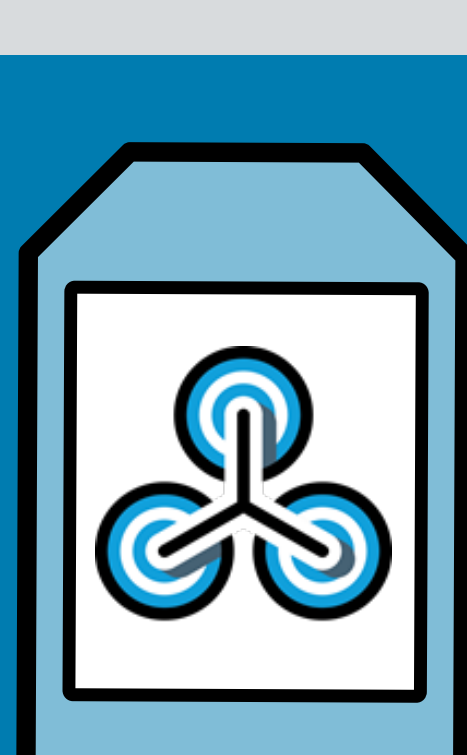
40% of doctors say that mobile devices decrease time spent on administration <sup>4</sup>



93% of doctors believe that mobile health apps can improve patient's health and outcomes <sup>5</sup>

## Zebra's Mobile Computing Devices and Workforce Connect

- Improve staff communications
- Increase enterprise effectiveness
- Simplify workflows



For more information on Zebra's Mobile Computing Devices and Workforce Connect, visit [www.zebra.com/contact](http://www.zebra.com/contact)

### Sources:

1 Spyglass Consulting Group, March 2014

2 Vocera/Spyglass

3 InCrowd

4 Healthcare Mobility Trends Survey, Jasmine Pennic, September 2013

5 Wireless Trends in Healthcare, Fred Pennic, March 2014